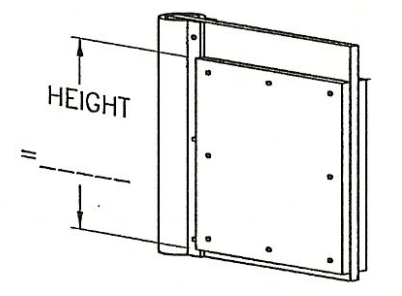
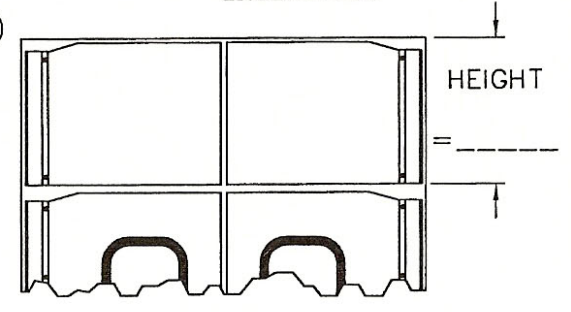


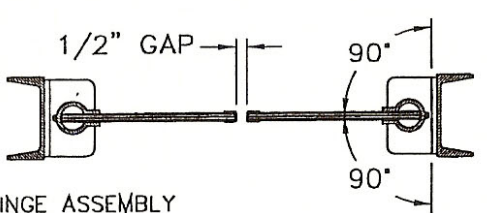
SPRING BUMPER



KICKPLATE



DOUBLE DUTCH



- 1 - TOP HINGE ASSEMBLY
- 2 - BOTTOM HINGE ASSEMBLY
- 3 - ANODIZED ALUMINUM FRAME PROFILE
- 4 - 9" WIDE x 14" HIGH CLEAR SAFETY ACRYLIC WINDOW
- 5 - HIGH PRESSURE LAMINATE OR ANODIZED ALUMINUM FACE PANEL
- 6 - 11mm THICK EXTERIOR GRADE PLYWOOD CORE
- 7 - STAINLESS STEEL TRIM

DOOR OPENING:
 _____ W x _____ H
 DOUBLE SINGLE
 QUANTITY: _____

OPTIONS
 (CHECK BOX IF APPLICABLE)

- DOOR CLADDING
 - LAMINATE UPPER PANELS
 BRAND: _____
 COLOR: _____
 MFR'S #: _____
 - ANODIZED ALUM. UPPER PANELS
 - FULL STAINLESS STEEL PANELS
 - FULL GALVANIZED STEEL PANELS
- 5/16" THICK HDP SPRING BUMPERS (UP TO 42" HIGH)
- CUSTOM WINDOW DESIGN
 - RECTANGULAR _____ W x _____ H
 - ROUND - DIAMETER: _____
- 9 1/4" JAMB GUARDS
- KICKPLATES: (UP TO 48" HIGH)
 - STAINLESS STEEL
 - GALVANIZED STEEL
- CART GUARD
 - HDP
- CHAIN LOCKING COLLAR
- PUSH PLATES
- DOUBLE DUTCH

S. S. QUOTE REF. # _____
 CUSTOMER _____
 APPROVED BY: _____
 P/O No.: _____
 DATE: _____

SUPERSEAL MFG. LTD.
 SERIES 1500 - MODEL 1502
 WOOD CORE IMPACT DOOR

DATE: FEB-07-02	SCALE: 1:24
DRAWN: OWEN C.	DWG NO: L1502