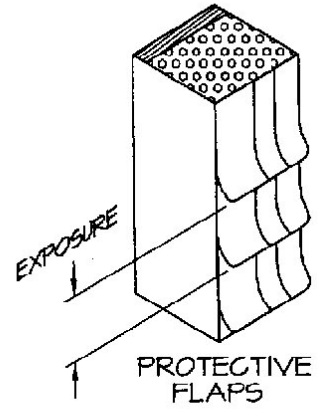
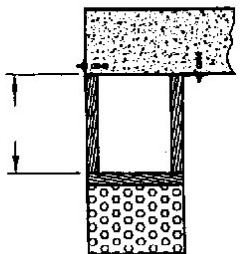
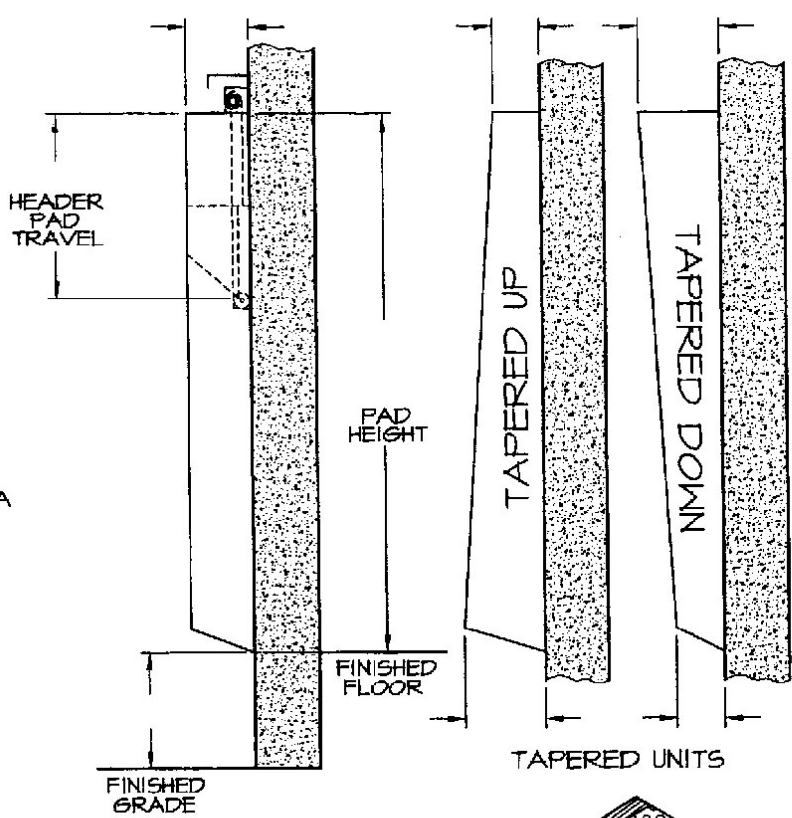


SECTION A-A



DOOR OPENING:
 _____ N x _____ H

COVER FABRIC: _____

COLOR: _____

OPTIONS
 (CHECK BOX IF APPLICABLE)

- EXTRA VERTICAL PAD HEIGHT
- EXTRA HEADER PAD TRAVEL
- EXTRA PROJECTION (FOAM ONLY)
- PROJECTION BOX
- TAPERED UNITS
- PROTECTIVE FLAPS:
 FABRIC TYPE: _____
 COLOR: _____
- DOUBLE LAYER ON IMPACT AREA:
 FABRIC TYPE: _____
 COLOR: _____
- MULTI-PLY MONOFILAMENT PVC FLAPS
- SPECIAL FOAM
 - FIRE RETARDANT
 - HIGH DENSITY
- BOTTOM SEAL
- COVER MATERIAL OVERLAPS EDGES ONLY
- PVC PROTECTIVE VERTICAL WEAR PANEL
- SECURITY SEAL
- GALVANIZED STEEL CHANNEL BACKING
- SCUFF GUARD
 (40" HIGH STANDARD)
 FABRIC TYPE: _____
 COLOR: _____
- GALVANIZED STEEL CANOPY
 _____ LONG x _____ PROJECTION

(NOTE: DOCK BUMPERS NOT INCLUDED)

S. S. QUOTE REF. # _____

CUSTOMER _____

APPROVED BY: _____

P/O No.: _____

DATE: _____

SUPERSEAL Mfg. Ltd.

SERIES 0351 FOAM PAD CURTAIN TRUCK DOCK SEAL

DATE: MAY 24/00 SCALE: N.T.S.

DRAWN: GK DWG NO: L351-B