

AFTERMARKET SOLUTIONS CATALOGUE



Équipement **MCF** Inc.

Table of Contents

Terms and Conditions	4
Safety and Lighting	
Manual Lights Communication Package	5
Automatic Lights Communication Package	5
Dock Lights	6
Replacement Traffic Lights	7
Wheel Chocks	8
Chock Safety Kits	8
Speed Bumps	9
Reflective Guides	9
Ratchet-Riser Trailer Stand	10
Energy-Saving Solutions	
Rubber Seal	10
Side Weather Seal / Sets	10
Rear Weather Seal / Sets	11
Wedges	11
Bottom Door Draft Seals	11
Roller Curtain Assembly	12
Protective Systems	
Bumpers	12
Molded Bumpers	12
Laminated Bumpers	13
Steel Faced Bumpers	14
Bumper Accessories	14
Door Track Guards	15
Bollard Guards	15
Dock Leveler Controls	
Single Push Button Control (SP1)	16
Advanced Single Push Button Control – SP2	17
Advanced Single Push Button Control – SP2 Auto-Park	17
Blue Genius™ Gold Series I	18
Blue Genius™ Gold Series II	18
Blue Genius™ Gold Series III	19
Blue Genius™ Control Board Cover Tool	19
Upgrade Opportunities	
Universal Hydraulic Conversion Kits – Single Push-Button	20
Safety Toe Guards	21
Replacement Hydraulic FHE Power Pack	21
Dangerous Goods	21
Replacement SP1, Single Push Button Control Box	21
Power Down Lip Assist Kit For Hydraulic Dock Levelers	22
Universal Mechanical Conversion Kits	22
Replacement Hold-Down Only – Cable Type	22
Caliper Brake Type	23

Table of Contents

Upgrade Opportunities (continued)

Replacement Hold-Down Only – Caliper Brake Type	23
Replacement Lip, Spools, and Pin (kit)	24
Lip Assist Assembly Retrofit Kit for Mechanical Dock Levelers	26
LDLR Lip Deployment Retrofit Kit for Mechanical Dock Levelers	27
MTS-M Retrofit Kit for Blue Giant Mantis / ADM Mechanical Dock Leveler	28

Overhead Door Accessories

Metal Canopies	29
Door Seal Repair Kit	29
Inflatable Shelter Repair Kit	29
Adjustable Head Pad Hardware	29

Blue Giant PVC Strip Curtains and Doors	30
--	----

Service Tech Accessories

Spring Socket Tool	31
Spring Removal Tool	31
Portable Maintenance Safety Stand	31

Folding Security Gates	32
-------------------------------------	----

Manual Pallet Jacks

FPT-55 Manual Pallet Jack	33
EPT-55 Manual Pallet Jack	33
EPT-55-G Galvanized Manual Pallet Jack (special order)	34
EPT-55-SS Stainless Steel Manual Pallet Jack (special order)	34

Notes	35
--------------------	----

Terms and Conditions

PRICING

All published prices and quoted prices are list prices. The price list is maintained and updated on our website. Dealers may utilize the parts order form for efficient order management. Prices are subject to change without notice and will be honored for 30 days provided sufficient support is provided. For parts not appearing in this list, price and availability may be requested by submission of a Special Parts Pricing Form. The dealer must include/provide the following information to allow for efficient communications including dealer code, product model, serial number (see Serial Number Identification Plates), original order number if available, manual number, and/or drawing reference. Effective September 1st, 2006, the standard discount is set at 30% for all sales. The dealer has no obligation to maintain the M.S.L.P. Special discounts may only be approved and authorized by the Parts Manager. It is our company policy to sell parts through our authorized dealer network and as such, an account must be established and be in good standing. In the event of non-dealer enquiries, we will do our best to direct these inquiries to an authorized dealer.

PAYMENTS AND DISCOUNTS

Standard terms are NET 30 days. Accounts over 60 days in arrears will be placed on automatic credit hold – no ship status until the account is brought back to good standing.

PARTS IDENTIFICATION AND INQUIRIES

Owner's manuals are supplied with each product that is shipped from the factory. This manual is to serve as the primary source for part number identification. Dealers must spend the time to look up the part and part number before soliciting the manufacturer for assistance. In the event the manual cannot be sourced, the manual can be downloaded from our website. We strive to maintain the most current issue on web and dealers should visit the website for regular updates. Requests for replacement printed hard copies or multiple copies available through the Parts Department at a cost of \$50 NET, each. Parts pricing and inquiries can be performed within the protected dealer log-in section. This service is provided only to our authorized dealers and a valid access password must be obtained. Contact the CSR group for assistance. For parts not listed within the owner's manual (for products older than 10 years old, see Obsolete Section), the dealer must submit the inquiry or call in for assistance, providing the following information to allow for efficient communications including dealer code, product model, serial number (see Serial Number Identification Plates), original order number (if available), manual number, and/or drawing reference including but not limited to any OEM numbers/markings appearing on the part itself. Parts that cannot easily be identified over the phone may be photographed & emailed to the factory for ease of identification. Alternatively, and if pre-approved by the Parts Manager, the unidentified part may be shipped, at dealers expense, to the factory.

SERIAL NUMBER IDENTIFICATION PLATES

All products leave the factory with an original serial plate or identification sticker affixed to the unit. It is important to ensure that the serial number is always provided when requesting assistance from the factory.

Location of Serial Plates

Dock Levelers: stationary toe guard (side) plus stamped on the rear channel
Edge-of-Docks: bumper block
Scissor Lifts: stationary toe guard (fixed end)
 Serial identification numbers are also affixed to power packs and control stations.

Manual Pallet Trucks: hanger (inside)

Electric Pallet Trucks: chassis plus stamped on the chassis

Lift Trucks: Mast plus stamped on the chassis

RECOMMENDED SPARE PARTS

Effective parts management and the responsibility of serving the customer quickly during stressful downtime are not to be burdened solely by the manufacturer. The authorized dealer should maintain a regular inventory of recommended spare parts as deemed appropriate by the factory. Regular inventory replenishment will allow the factory to better schedule the dealer's requirements and avoid undue rush order expediting. For loading dock equipment, the inventory list has been expanded to level for both the service vehicles and the dealership. This information is available in the recommended spare parts section of our website.

ORDER TYPES

Rush Orders for stocked parts (must identify rush, same day). 25% discount applies. The order will ship same day provided order received before 12:00pm EST and factory preferred carrier used. Daily Orders for stocked parts: 30% standard discount. The order will ship next day provided order received by 12:00pm EST and factory preferred carrier used. Stock Orders for stocked parts and/or recommended spare parts. 35% standard discount. The order will ship within five business days from receipt of order. Applies to orders with values greater than \$3,600 LIST (before freight and taxes).

ORDERING

Parts orders will be accepted by mail, fax or e-mail. To assist in streamlining the order process, the factory recommends that dealers utilize our Parts Order Form. In the event the dealer utilizes their own vehicle to order parts, the dealer must ensure that the pertinent information found with the factory document is included with the dealer submission. To protect both the dealer and the factory from miscommunications that may result shipping the incorrect part and subsequent frustrations, verbal purchase orders are not accepted. All orders, whether verbal or written will require an accepted order acknowledgement (see "Order Acknowledgements" below).

Once an order is entered into the system, it cannot be added to, deleted from or changed unless a discrepancy is noted and at that time, the factory will take necessary actions to correct the order. Additions to existing orders should be submitted under a new purchase order. Requests to consolidate the shipment will be honored where deemed feasible. PARTIAL SHIP VS. SHIP COMPLETE. Unless identified otherwise by the dealer at time of order, the standard practice is to ship quantities available at time of order and back order the remaining. Partial shipments may be deemed appropriate from the factory as not to deplete 100% of inventories used to support the entire dealer network. Dealers wishing to minimize applicable freight charges must clearly identify on the original order "ship complete" whereby the entire order will ship together regardless of longer lead time items.

A partial shipment is based on a complete part, kit or assembly. The factory will not ship out an incomplete part, kit or assembly unless written confirmation to do so is received from the dealer.

ORDER ACKNOWLEDGMENTS

All orders and accepted quotations will be followed up with an Order confirming quantity, part numbers, part description, ship to address, purchase order number, expected lead times and other information that may pertain to the order. Order Acknowledgements must be returned and accepted before order can be processed.

MINIMUM PARTS ORDER VALUE

Parts orders are subject to a minimum order value. The minimum value for a parts order (before freight and taxes) is \$25 NET. Orders that are received less than this value are subject to an administration fee that will be applied in order to equal the sum of \$25 and will be entered as a separate line item identified as "min-ord." The dealer is encouraged to consolidate orders prior to submitting to the factory to avoid unnecessary charges.

NON-CANCELABLE ORDERS

In many cases, there is a need to request quotation for parts that are considered to be "special," with longer lead times than normal. The parts may include manufactured parts, older parts or items not identified in the manuals provided. The quote from the factory will identify the terms and conditions of these orders if accepted. The serial number of the existing unit must be provided. An Order Acknowledgement will still be required (see above). Orders for non-cancelable special parts are non-cancelable and non-returnable. The price quoted is exempt from discounts and will be quoted at NET dealer prices.

DANGEROUS GOODS

To avoid unnecessary freight surcharges and documentation that could make shipping certain parts and components prohibitive across the border, the following items are excluded from shipping through the factory Parts Department and may require the dealer to source locally. Hydraulic fluid found in cylinders, power pack reservoirs, etc. (Acceptable alternatives that can be sourced locally include Dextron III and N32 hydraulic fluid.) Touch-up paint (This can be sourced through our National Supplier program, see Dock Accessories, sub Paint, on our website.) Wet filled batteries.

OBsolete / PRODUCT SUPPORT LIMITATIONS

As an original equipment manufacturer, we are obligated to support the product in aftermarket parts sales up to 10 years. The first two digits of the product serial number identifies the year the product was manufactured. We will do our utmost to source replacement parts, however, we are not obligated to source the part if the unit is over 10 years old and the part is no longer used in the regular manufacture of the existing product line. The dealer must source drive units (new or rebuild) for discontinued or older generation products. Requests should not be forwarded to the factory for components such as gearboxes, motors, contactors, etc. For your convenience, we post on our website an Obsolete Parts list. These parts may be in stock as a result of discontinued products, product improvements and/or overstocked due to minimum order requirements. These parts are available on a first come, first served basis and will not be replenished. If it is no longer published on the website, it is no longer available.

FREIGHT

All prices are FOB factory. Please ensure that detailed shipping instructions appear on all orders. Collect shipments must clearly identify the carrier of choice and account number to be billed. Returned and/or refused shipments resulting in back-charges to the factory will be billed back to the dealer at cost plus an additional \$25 NET administration fee. Collect shipments e.g. carriers other than our preferred carriers listed (see Preferred Carriers) must allow up to an additional 24 hours for shipping as non-preferred carriers may not respond to the original call for pick up request on a timely manner. The dealer may also opt for prepay and add terms whereby the factory arranges shipment through preferred carriers and/or couriers. Due to volume discounts, we pass the savings along to the dealers. Freight charges will be added and appear on your parts invoices. For dealer orders marked pick up, the Parts Department will notify the dealer when the order is ready for pick up. If the order is not picked up within two days from the first notification, the factory will ship out the order via a preferred carrier or courier, terms prepay and add. The freight charges will be added to your parts invoice. Freight charges and / or claims resulting from loss or damage to goods in transit are the responsibility of the dealer. Always mark noticeable damages and deficiencies on the proof of delivery slip before accepting the shipment. The factory cannot assist if the dealer does not act first.

PREFERRED CARRIERS

For shipments within USA: UPS Ground (up to 80 lbs per box) / Conway (over 80 lbs skidded)

For shipments within Canada: Purolator (up to 80 lbs per box) / Conway (over 80 lbs skidded)

For shipments within Mexico: Freight forwarder must be specified by dealer

For all other destinations: Freight forwarder must be specified by dealer

PARTS WARRANTY POLICY

The following guidelines and documentation have been assembled to assist our distribution network in administering parts orders, warranty claims and other related policies as it applies to aftermarket sales. The warranty policies are a statement of the factory's intent to rectify component or parts failures resulting from defective materials or substandard workmanship at the time of manufacture. No other responsibility is implied or assumed. Furthermore, the factory assumes no responsibility or liability for consequential damages of any kind that may result from the sale of any component or parts. The factory will deem whether or not a defective component or part is required to be returned with the warranty claim. A step by step Warranty process can be viewed on-line and the Warranty Claim form can be downloaded from our website.

WARRANTY PERIOD.

All replacement components and/or parts are warranted for a period of 90 days from date of shipment.

Safety and Lighting Systems

Manual Lights Communication Package

Designed for all shipping and receiving areas. Available in 115VAC or 230VAC 50-60 Hz input / 24VDC output

The two-way communication system improves loading dock safety and protects dock equipment and building walls. The energy-efficient light-emitting diode lights help truck drivers accurately back trailers into loading docks. The sealed, low-profile fixture is impact-resistant, weatherproof and temperature tolerant. Durable materials plus long life LEDs equal service-free units and reduced shipping and energy costs.

KIT COMES WITH: LED traffic light (slim profile), exterior driver warning sign and two (2) position selector switch.

PRODUCT DETAILS:

- Easily installed
- CSA approved
- Uses 30% less energy
- Shock and vibration proof
- Comes with 10' (3048 mm) – 3c/20awg communication cable
- Provides high quality light with no glare
- LED's are good for 100,000 hours or 10 years of continuous use
- 1-year limited warranty (parts only)



Description	Part No. (package)
Manual LED Traffic Lights / Controller (24 VAC / DC)	70-0010-24M

OPTIONAL:
Manual Controller with Yellow Traffic Light (instead of the standard blue shown above)



Description	Part No. (package)
Optional Yellow Traffic Light	70-0010-24M-1

Automatic Lights Communication Package

Designed for all shipping and receiving areas. Improves loading dock safety and protects dock equipment and building walls.

KIT COMES WITH: LED traffic light (slim profile), exterior driver warning sign and three position selector switch for Red / Auto / Green.

PRODUCT DETAILS:

- Easily installed
- CSA approved
- Uses 30% less energy
- Shock and vibration proof
- Provides high quality light with no glare
- LED's are good for 100,000 hours or 10 years of continuous use



For Overhead Doors

Description	Part No. (package)
Door Interlock	70-0004-1 (includes photo-proximity)

For Dock Leveler

Description	Part No. (Package)
Door Interlock	70-0004-2 (includes proximity sensor)

For ML10 Vehicle Restraint

Description	Part No. (package)
Restraint Interlock	For versions sold after March 2013: 70-0004-7 (includes proximity sensor)
	For versions sold before March 2013: 70-0004-3 (includes proximity sensor)

Dock Lights

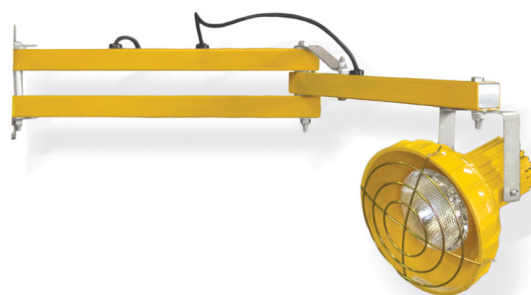
Loading Dock Light

A safe way for employees to control traffic communication. Contributes to a safer work environment by minimizing risk of worker injury.

PRODUCT DETAILS:

- Double-strut dock light (NOTE: does not come with bulb)
- CSA approved
- Incandescent / Polycarbonate head

Description	Part ID
40" Reach	LDL-150
60" Reach	DL-60-P



OPTIONAL REPLACEMENT BULB

Description	Part ID
90W Incandescent Bulb	026-725

LED Loading Dock Light (comes with LED bulb)

Blue Giant loading dock lights are equipped with a LED bulb, which burns brighter than incandescent or halogen bulbs while using 80% less energy. Lumen intensity is comparable to a 150 watt PAR 38 bulb. Improves efficiency and is ideal for use in refrigerated warehouses. The double strut design provides maximum strength and superior reliability.

PRODUCT DETAILS:

- Lamp type / Head: LED / Polycarbonate
- Arm length: 40" (1016 mm)
- CSA approved
- Comes with 9 high-output 3 watt LED bulbs and cage guard

Description	Part ID
Dock LED Light 40" Reach	839-242
Dock LED Light 60" Reach	DL-60-PLED



OPTIONAL REPLACEMENT BULB

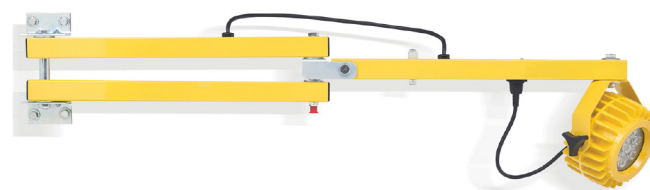
Description	Part ID
Replacement Bulb, LED Par 38	026-725-1

HD Series LED Heavy Duty Dock Light

Blue Giant's Heavy Duty LED (HDLED) lamp heads are virtually indestructible. These units are designed for all applications including wet and damp locations such as wash down areas. These lights have a 94% energy savings while providing almost 1000 lumens of lights and come with an extended 5 year warranty.

PRODUCT DETAILS:

- Uses up to 94% less energy than an incandescent bulb
- Up to 60,000 hours life expectancy
- Ideal for food service industry or refrigerated warehouse applications
- Shatterproof polycarbonate lens
- NEMA 4 rated (for wet locations)



94% ENERGY SAVINGS

Description	Part ID
HD LED 24" Reach	DL24-HDLED
HD LED 40" Reach	DL40-HDLED

Gooseneck Industrial Light (comes with LED bulb)

The Gooseneck Industrial Light is the ideal solution for both dock and task lighting applications. Low profile and easy to position, it can be rotated 180 degrees for multidirectional illumination. The stainless steel arm extends 27" (686 mm) above the housing and bends easily around most dock door tracks. The impact and heat resistant polycarbonate light head is cool to the touch and heat resistant, increasing bulb life.

PRODUCT DETAILS:

- Robust light fixture with flexible stainless steel arm that will not sag
- Rugged arm assembly employs flexible conduit with a steel elbow to simplify positioning
- CSA approved
- No internal cooling fan required; reducing energy consumption
- Impact and heat resistant polycarbonate light head remains cool to the touch



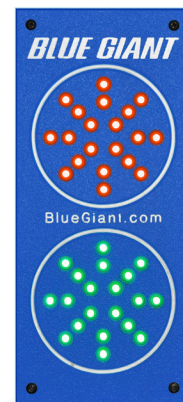
Description	Part ID
Dock-LED Light	DLGN-120-PLED

Replacement LED Traffic Light

PRODUCT DETAILS:

- Low-profile design eliminates impact damage
- Uses 30% less energy than most models
- Good for 100,000 hours or 10 years of continuous use
- Made of ultra-high molecular weight plastic

Description	Part ID
LED Traffic Light (115 VAC) SLIM LED	032-461-1
LED Traffic Light (24 VAC / DC) SLIM LED	032-461



Replacement LED Traffic Light, Yellow

PRODUCT DETAILS:

- Energy-efficient (consume 5-10% the energy of an incandescent bulb) and long-lasting
- Yellow polypropylene housing will not rust, pit or corrode
- Shallow body depth with integral lens visors for extended visibility

Description	Part ID
LED Traffic Light (115 VAC) – Yellow	032-398
LED Traffic Light (115 VDC) – Black	032-398-1
LED Traffic Light (24 VDC) – Yellow	032-398-2
LED Traffic Light (12 VDC) – Yellow	787-059-1



Wheel Chocks

When it comes to heavy equipment in the shipping and receiving area, safety is always a concern. When operating a powered industrial truck or forklift to load or unload trucks, disaster can occur if the truck shifts or moves. When properly placed, Blue Giant laminated wheel chocks are designed to secure and lock the truck wheels to prevent them from shifting or moving with the weight of the truck during loading / unloading.

PRODUCT DETAILS:

- Durable in all weather conditions
- Meets all OSHA requirements

Description	Part ID
Laminated Wheel Chock	090-496
Molded Wheel Chock	090-490
Aluminum Wheel Chock	090-490-ALUM
Ice Chock	701-B22



Accessories

Description	Part ID
Wheel Chock Bracket (A)	091-361
Caution Sign English (B)	038-231 E
Caution Sign French (not shown)	038-231 F
15' Galvanized Chain (D)	091-023



Chock Safety Kits

KIT INCLUDES:

Molded / laminated chock, chain, bracket, and caution sign.

Description	Kit Part ID
Laminated Kit	701-B99-1
Molded Kit	701-B99
Aluminum Kit	
Ice Chock Kit	701-B22-2



Speed Bumps

The world's lightest modular rubber speed bump. Standard speed bump system section includes two main pieces, two end caps x 5" (127 mm) LG and one connector clip. Main pieces may be added and connected to form larger units. Weighs only 10 lbs (4.5 kgs) per piece, enabling shipping at a fraction of the cost of the heavier speed bumps. Each speed bump section is embedded with six yellow safety plates of weather resistant, composite material for protection from salt, freeze and thaw. Can be used as a cable cover - bottom sides include 1" x 1-1/2" (25 x 38 mm) channels for protecting temporary or permanent cables or hoses.

PRODUCT DETAILS:

- Made of recycled PVC, with a flexibility enabling it to contour to the road crown
- Will not chip, rot or corrode
- Main piece measures 36" L x 10.5" W x 2" H (914 x 268 x 51 mm)

OTHER FEATURES:

- 5" (127 mm) Cap - sloped modular profile prevents pedestrians from tripping

APPLICATIONS:

- Commercial and residential indoor garages
- Laneways and residential roads
- Shopping centers
- Drive-thrus



Description	Part ID
Speed Bump, Black	70-001812
Speed Bump, Yellow	70-001813

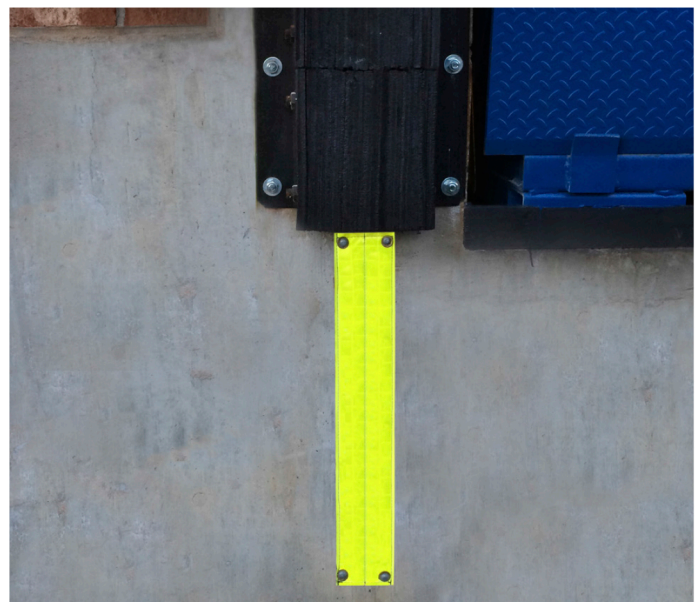
Reflective Guides

Guides trailers safely and accurately to the center of the dock.

PRODUCT DETAILS:

- Clearly identifies the dock location for incoming traffic
- Improves dock visibility in poor weather conditions
- Light is 4-5 times more vivid than standard bead reflectors

Description	Part ID (set)
Reflective Guides – 18" 4" W x 18" L (101 x 457 mm)	70-0001-18
Reflective Guides – 24" 4" W x 24" L (101 x 610 mm)	70-0001-24
4" W x 30" L (101 x 762 mm)	70-0001-30



Ratchet-Riser Trailer Stand

Helps reduce the risks of costly trailer damage during loading and unloading. Supports semi-trailers to prevent up-ending when the trailer is not connected to a tractor. Also levels trailers parked on sloped surfaces and prevents landing gear from sinking into soft ground. These trailer stands are portable, allowing them to be easily moved / repositioned. Pipe handle supports easy raising and lowering. No bending or stooping required.

PRODUCT DETAILS:

- 10,000 lbs (4,545 kgs) load capacity
- 40,000 lbs (18,181 kgs) lifting capacity
- 51" (1295 mm) maximum height
- 39-1/2" (1003 mm) minimum height
- 38" (965 mm) removable "pipe" handle
- Heavy-duty 10" (254 mm) solid rubber wheels
- Yellow finish
- Meets OSHA requirements
- Weight - 105 lbs (48 kgs)



Description	Part ID
Trailer Stabilizing Jack Stand	70-0002
Auto Stand	70-0002-1
Auto Stand +	70-0002-2

Energy-Saving Solutions

Rubber Seal (chain cup draft plug)

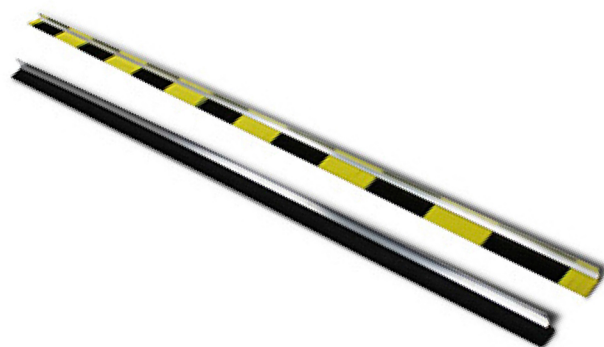
A simple solution. Stops air and inspects infiltration on any dock leveler with a pull chain.



Description	Part ID
Draft Plug	200-02986

Side Weather Seal / Sets

An average gap size of 1" (25 mm) exists between the dock leveler and pit wall (on both sides). This opening is equal to having a 12" x 12" (305 x 305 mm) window of air infiltration into your building per dock position. We highly recommend using rubber or brush weather seals to prevent loss of conditioned air and keep unconditioned air out of the building.



SET INCLUDES:

Two aluminum retainers, two weather seals (brush or rubber) and screws (quantity is based on set). For 10' (3048 mm) or 12' (3658 mm) docks, order 6' (1829 mm) long seals for ease in shipping and handling.

Rubber

Description	Kit Part ID
6' (58") Long (1473 mm)	206-5017
8' (81") Long (2057 mm)	206-5017-1

Brush

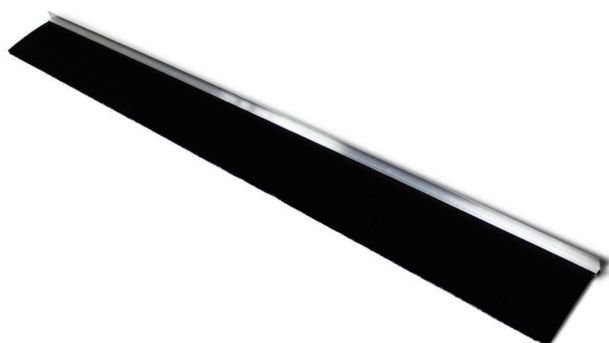
Description	Kit Part ID
6' (58") Long (1473 mm)	206-5245
8' (81") Long (2057 mm)	206-5245-1

Brush (Zebra Stripe)

Description	Kit Part ID
6' (58") Long (1473 mm)	206-5083
8' (81") Long (2057 mm)	206-5083-1

Rear Weather Seal / Sets

Energy Loss Savings: Reduces heating and cooling costs by maintaining internal temperature control.



RUBBER TYPE: 5-1/2" x 3/16" (138 x 5 mm) thick

SET INCLUDES: One aluminum retainer, one rubber weather seal, and screws (quantity is based on set).

Deck Size (Wide)	Description	Kit Part ID
5' (1524 mm)	Rear Rubber Weather Seal, 52" (1321 mm)	1001781-3
6' (1829 mm)	Rear Rubber Weather Seal, 64" (1626 mm)	1001781
6' 6" (1981 mm)	Rear Rubber Weather Seal, 70" (1778 mm)	1001781-1
7' (2134 mm)	Rear Rubber Weather Seal, 75" (1905 mm)	1001781-2

BRUSH TYPE: 6" (152 mm) wide

SET INCLUDES: One aluminum retainer, one brush weather seal, and screws (quantity is based on set).

Deck Size (Wide)	Description	Kit Part ID
5' (1524 mm)	Rear Rubber Weather Seal, 52" (1321 mm)	206-5020
6' (1829 mm)	Rear Rubber Weather Seal, 64" (1626 mm)	206-5020-1
6' 6" (1981 mm)	Rear Rubber Weather Seal, 70" (1778 mm)	206-5020-2
7' (2134 mm)	Rear Rubber Weather Seal, 75" (1905 mm)	206-5020-3

Leveler Seal Wedges

Energy Loss Savings: Seals the gap between the pit wall and the dock leveler.

Description	Part ID
16oz Hypalon with Closed Cell Foam Wedges	997-WEDGES



Bottom Door Draft Seals

Energy Loss Savings: Seals the gap under existing overdoor caused by dock leveler or uneven floor.

Description	Part ID
16oz Hypalon 2" x 2" x door width	1000098



Roller Curtain Assembly

Protect your dock leveler with a roller curtain. Designed to eliminate drafts and enable a clean pit.

The roller curtain assembly is designed to keep pests and debris out, maintaining a clean pit. Autumn leaves, snow and rain are also deflected, while reducing heating and cooling costs. With fewer hours spent cleaning the pit, this dock accessory will save your facility time and money.

PRODUCT DETAILS:

- 22oz yellow vinyl
- Includes mounting brackets and grommets on bottom edge
- 12" (305 mm) O.C. or retaining tabs as shown
- Reduces heating, cooling and maintenance costs
- Helps prevent drafts



Protective Systems

Keep your loading docks safe ...

Reduce the risks of costly equipment damage, physical injury and legal / insurance issues. Trucks are required under OSHA safety standards to have their rear wheels chocked and the brakes set at all times. OSHA recommends using two wheel chocks per trailer. (1910.178 (K) 1)

Bumpers

A faulty or poorly installed dock bumper can have serious consequences. When correctly applied, bumpers protect dock equipment and building walls from the negative forces of incoming trailers. Blue Giant dock bumpers are available in molded or laminated versions.

Molded Bumpers

PRODUCT DETAILS:

- Ideal for lower-intensity applications
- Made from a nylon cord-reinforced rubber compound
- Shaped with lag bolt holes

Description	Part ID
4" D x 10" W x 13" H (102 x 254 x 330 mm)	DB13
4" D x 10" W x 18" H (102 x 254 x 457 mm)	DB18
4" D x 10" W x 30" H (102 x 254 x 762 mm)	DB30
4" D x 18" W x 18" H (102 x 457 x 457 mm)	090-470



Face Plates for Molded Rubber Bumpers

NOTE: Face plates include the bumpers

Description	Part ID
4" D x 10" W x 13" H (102 x 254 x 330 mm)	DB13FP
4" D x 10" W x 18" H (102 x 254 x 457 mm)	DB18FP

Description	Part ID
Wedge Anchor 5/8" x 6"	010-108

Laminated Bumpers (Economy)

PRODUCT DETAILS:

- 3/16" angles
- Masticated rubber

Description	Part ID
4.5" D x 10" H x 14" W (114 x 254 x 356 mm)	DB411
5.5" D x 10" H x 19" W (140 x 254 x 483 mm)	DB511
4.5" D x 20" H x 13" W (114 x 508 x 330 mm)	DB412
5.5" D x 20" H x 13" W (140 x 508 x 330 mm)	DB512
4.5" D x 10" H x 24" W (114 x 254 x 610 mm)	DB421
5.5" D x 10" H x 24" W (140 x 254 x 610 mm)	DB521
4.5" D x 10" H x 36" W (114 x 254 x 914 mm)	DB431
5.5" D x 10" W x 36" H (140 x 254 x 914 mm)	DB531



Description	Part ID
Wedge Anchor 5/8" x 4.5"	010-107

Laminated Bumpers (Standard Grade)

PRODUCT DETAILS:

- Premium protection against impact damage
- 1/4" angles
- Conveyor belt rubber



Description	Part ID
4" D x 10" H x 14" W (102 x 254 x 356 mm) bolted	BG410-12-1/4
6" D x 10" H x 14" W (152 x 254 x 356 mm) bolted	BG610-12-1/4
4" D x 20" H x 13" W (102 x 356 x 330 mm) bolted	BGV420-11-1/4
6" D x 20" H x 13" W (152 x 356 x 330 mm) bolted	BGV620-11-1/4
4" D x 10" H x 26" W (102 x 254 x 660 mm) bolted	BG410-24-1/4
6" D x 10" H x 26" W (152 x 254 x 660 mm) bolted	BG610-24-1/4
4" D x 10" H x 38" W (102 x 254 x 965 mm) bolted	BG410-36-1/4
6" D x 10" H x 38" W (152 x 254 x 965 mm) bolted	BG610-36-1/4

Laminated Bumpers (Premium)

PRODUCT DETAILS:

- Heavy duty quality
- 3/8" angles
- Tire rubber



Description	Part ID
4" D x 10" H x 14" W (102 x 254 x 356 mm) bolted	BG410-12
6" D x 10" H x 14" W (152 x 254 x 356 mm) bolted	BG610-12
4" D x 20" H x 13" W (102 x 356 x 330 mm) bolted	BGV420-11
6" D x 20" H x 13" W (152 x 356 x 330 mm) bolted	BGV620-11
4" D x 10" H x 26" W (102 x 254 x 660 mm) bolted	BG410-24
6" D x 10" H x 26" W (152 x 254 x 660 mm) bolted	BG610-24
4" D x 10" H x 38" W (102 x 254 x 965 mm) bolted	BG410-36
6" D x 10" H x 38" W (152 x 254 x 965 mm) bolted	BG610-36

Steel Faced Bumpers (Economy)

PRODUCT DETAILS:

- 1/2" support rods
- 3/16" angles
- Masticated rubber
- 3/8" face plate

Description	Part ID
5" D x 10" H x 14" W (130 x 254 x 356 mm)	DB411FP
6" D x 10" H x 19" W (156 x 254 x 483 mm)	DB511FP
5" D x 20" H x 13" W (130 x 508 x 330 mm)	DB412FP
6" D x 20" H x 13" W (156 x 508 x 330 mm)	DB512FP

Description	Part ID
Wedge Anchor 5/8" x 4.5"	010-107



Steel Faced Bumpers (Premium Grade)

PRODUCT DETAILS:

- 3/8" face plate with 1/4" support (5/8" front)
- 1/4" angles
- Conveyor belt rubber
- 3/4" support rods

Description	Part ID
4" D x 10" H x 14" W (102 x 254 x 356 mm) bolted	BG410-14
6" D x 10" H x 14" W (152 x 254 x 356 mm) bolted	BG610-14
4" D x 20" H x 13" W (102 x 356 x 330 mm) bolted	BGV420-11
6" D x 20" H x 13" W (152 x 356 x 330 mm) bolted	BGV620-11



Bumper Accessories



Above Dock Risers
Consult factory



Bumper Extensions
Consult factory



Bumper Mounting Plates
Consult factory

Door Track Guards

Damage to door tracks can increase door maintenance costs and cause downtime. Door Track Guards can help minimize these problems.

MINIMIZE TRACK DAMAGE:

- absorbs blow after blow to provide solid door track protection.

DECREASE MAINTENANCE COSTS:

- minimizes door maintenance costs and downtime.

HIGHLY VISIBLE:

- The safety yellow finish are visible at the door opening, helping to increase safety at the dock.

EASILY INSTALLED:

- Mounts to ground and wall for extra protection



Safety Yellow Finish

Description	Height	Part ID (set)
Door Barriers Kit	24" (610 mm)	70-0005-24
Door Barriers Kit	36" (914 mm)	70-0005-36
Door Barriers Kit	48" (1219 mm)	70-0005-48

Galvanized Finish

Description	Height	Part ID (set)
Door Barriers Kit	24" (610 mm)	70-0005-24G
Door Barriers Kit	36" (914 mm)	70-0005-36G
Door Barriers Kit	48" (1219 mm)	70-0005-48G

Bollard Guards

High quality protective shields ... the most secure method of bollard cover attachment anywhere. No fasteners, no foam strips. Why Paint? Simply install a Blue Giant bollard guard over your existing steel pipe post bollard and eliminate the hassle and cost of regular maintenance. Plus the added benefit of improved appearance.

If you are unsure of the outside diameter of the existing steel pipe post, use a flexible tape, to measure completely around the outside of the steel post for the circumference and divide the circumference by 3.14 to determine the outside diameter.

PRODUCT DETAILS:

- Blue Giant bollard guards are also available with high quality custom graphics – Corporate identification, messaging
- With or without recessed reflective stripes
- Available in variety of colors, diameters and lengths
- Weather and fade resistant, high visibility
- Unique, easy installation
- High quality, high density polyethylene plastic
- Ultraviolet stable
- All Blue Giant bollard guards are shipped with an installation kit

Description	Part ID
Bollard Guard 5" (127 mm) I.D. Yellow	016-001
Bollard Guard 7" (178 mm) I.D. Yellow	016-002
Bollard Guard 9" (228 mm) I.D. Yellow	016-003



Dock Leveler Controls

Single Push Button Control (SP1)

The Single Push Button Control (SP1) operates a standalone, pit-style hydraulic dock leveler via a constant-pressure "I" (UP) button.

PRODUCT DETAILS:

- UL / CSA / CE approved
- Overall dimensions: 6 1/2" x 3 1/4" x 5 1/8" (165 x 83 x 130 mm)
- NEMA4X / IP65 rated, plastic enclosure is resistant to both corrosion and wet conditions

Without Overload Protection

Description	Part ID
1 H.P. 115/1/50-60	027-006-L
1 H.P. 208/230/240/1/50-60	027-007-L
1 H.P. 208-230/3/60	027-008-L
1 H.P. 460/3/60	027-005-L
1 H.P. 460/3/60	027-009-L

With Internal Overload - no external reset button

Description	Part ID
1 H.P. 115/1/50-60	027-006-LO
1 H.P. 208/230/240/1/50-60	027-007-LO
1 H.P. 208-230/3/60	027-008-LO
1 H.P. 460/3/60	027-005-LO
1 H.P. 575/3/60	027-009-LO

CSA and UI Specification on Motor Overload Protection

The standard powerpack is equipped with a 1 HP motor which requires appropriate overcurrent protection (fuses). These motors are rated for intermittent duty because they are in operation only when the control push button is depressed. It does not have and will not require an overload protection as in compliance with the Canadian Safety Authority (CSA), Ontario Electrical Safety (ESA), and Underwriters Laboratories (UL) codes amongst others. Please review the excerpt from the CSA and UL code book in regards to overload protection for motors.

- CSA Excerpt: 28-308 Overload protection not required
- UL Excerpt: 430.33 Intermittent and Similar Duties



Advanced Single Push Button Control – SP2

The Single Push Button Control (SP2) operates a standalone airbag or pit-style hydraulic dock leveler.

PRODUCT DETAILS:

- UL / CSA approved
- Overhead door sensor, prevents use of the dock leveler when the overhead door is closed
- Can be connected with mechanical limit switch or photoeye sensor
- Overall dimensions: 5 15/16" L x 6 15/32" W x 4" D (151 x 164 x 102 mm)
- NEMA4X / IP65 rated, plastic enclosure is resistant to both corrosion and wet conditions



Description	Part ID
110-130V, 1PH, 50-60Hz w. 24 VDC Transformer (std.)	SP2S1115
208-240V, 1PH, 50-60Hz w. 24 VDC Transformer (std.)	SP2S1230
208-240V, 3PH, 50-60Hz w. 24 VDC Transformer (std.)	SP2S3230
380-480V, 3PH, 50-60Hz w. 24 VDC Transformer (std.)	SP2S3460
575-600V, 3PH, 50-60Hz w. 24 VDC Transformer (std.)	SP2S3575

Advanced Single Push Button Control – SP2 Auto-Park

The Single Push Button Control (SP2) with Auto-Park feature operates a pit-style hydraulic dock leveler.

PRODUCT DETAILS:

- UL / CSA approved
- Overhead door sensor, prevents use of the dock leveler when the overhead door is closed, can be connected with mechanical limit switch or photoeye sensor
- Auto-park feature is controlled via a selector switch, can be connected with mechanical limit switch or 24VDC proximity sensor
- Overall dimensions: 5 15/16" L x 6 15/32" W x 4" D (151 x 164 x 102 mm)
- NEMA4X / IP65 rated, plastic enclosure is resistant to both corrosion and wet conditions



Description	Part ID
110-130V, 1PH, 50-60Hz w. 24 VDC Transformer (std.)	SP2S1115
208-240V, 1PH, 50-60Hz w. 24 VDC Transformer (std.)	SP2S1230
208-240V, 3PH, 50-60Hz w. 24 VDC Transformer (std.)	SP2S3230
380-480V, 3PH, 50-60Hz w. 24 VDC Transformer (std.)	SP2S3460
575-600V, 3PH, 50-60Hz w. 24 VDC Transformer (std.)	SP2S3575

NEMA Rating Chart

Enclosure Type	Typical Mounting Location	Short Designation	Protects Against
NEMA 12	Indoor	Watertight / Drip-tight / Dust-resistant	Dust, dirt, dripping non-corrosive liquids
NEMA 4	Indoor / Outdoor	Watertight / Rain-resistant	Splashes, circulating dust, ice
NEMA 4X	Indoor / Outdoor	Watertight / Rain-resistant	Splashes, windblown dust, ice, corrosion

Blue Genius™ Gold Series I

The Blue Genius™ Gold Series I operates a standalone air-powered or hydraulic dock leveler.

PRODUCT DETAILS:

- UL / CSA approved
- NEMA4X / IP65 polycarbonate enclosure- resistant to both corrosion and wet conditions
- Onboard diagnostics and self-testing
- Blue Genius™ memory and service interval indicator
- Programmable ports; two inputs and one output for interlocking purposes
- Printed circuit board technology

Description	Part ID
110-130V, 1PH, 50-60Hz w. 24 VDC Transformer (std.)	
208-240V, 1PH, 50-60Hz w. 24 VDC Transformer (std.)	
208-240V, 3PH, 50-60Hz w. 24 VDC Transformer (std.)	
380-480V, 3PH, 50-60Hz w. 24 VDC Transformer (std.)	
575-600V, 3PH, 50-60Hz w. 24 VDC Transformer (std.)	



Blue Genius™ Gold Series II

The Blue Genius™ Gold Series II operates a standalone hydraulic or electric vehicle restraint.

PRODUCT DETAILS:

- UL / CSA approved
- NEMA4X / IP65 polycarbonate enclosure, resistant to both corrosion and wet conditions
- Onboard diagnostics and self-testing
- Blue Genius™ memory and service interval indicator
- Programmable ports; two inputs and one output for interlocking purposes
- Printed circuit board technology
- Red / Green / Yellow led interior lights communication system

Description	Part ID
110-130V, 1PH, 50-60Hz w. 24 VDC Transformer (std.)	
208-240V, 1PH, 50-60Hz w. 24 VDC Transformer (std.)	
208-240V, 3PH, 50-60Hz w. 24 VDC Transformer (std.)	
380-480V, 3PH, 50-60Hz w. 24 VDC Transformer (std.)	
575-600V, 3PH, 50-60Hz w. 24 VDC Transformer (std.)	



Blue Genius™ Gold Series III

The Blue Genius™ Gold Series III operates a dock equipment combination.

PRODUCT DETAILS:

- UL / CSA approved
- NEMA4X / IP65 polycarbonate enclosure-resistant to both corrosion and wet conditions
- Onboard diagnostics and self-testing
- Blue Genius™ memory and service interval indicator
- Programmable ports; two inputs and one output for interlocking purposes
- Printed circuit board technology
- Red / green / yellow led interior lights communication system

Description	Part ID
Power Board Sub-Assembly † (1PH 115V 50-60HZ)	BGGFS1115
Power Board Sub-Assembly † (1PH 230V 50-60HZ)	BGGFS1230
Power Board Sub-Assembly † (3PH 230V 50-60HZ)	BGGFS3230
Power Board Sub-Assembly † (3PH 400V 50-60HZ)	BGGFS3400
Power Board Sub-Assembly † (3PH 460V 50-60HZ)	BGGFS3460
Power Board Sub-Assembly † (3PH 575V 60HZ)	BGGFS3575



Blue Genius™ Control Board Cover Tool

Designed for easy use by service technicians during repair and maintenance procedures.

Description	Part ID
Control Board Cover Tool	70-007156



Upgrade Opportunities

Universal Hydraulic Conversion Kits – Single Push-Button

Advantages of the Blue Giant Conversion Kit:

RELIABILITY: The normal locking and unlocking of all mechanical Hold down systems on mechanical dock levelers create wear on components that eventually cause down time for repairs.

LOWER LIFETIME OPERATING COST: Maintenance requirements and total lifetime operating costs are significantly lower for hydraulic dock levelers compared to mechanical dock levelers.

SAFETY: Wall-mounted pushbutton operation of hydraulic units enables easier operator control and reduces the risk of muscle strain and other worker injuries which could result from deploying a mechanical dock leveler.

LOW NOISE LEVEL: Smooth, quiet operation at the touch of a button contributes to a more pleasant work environment.

KIT INCLUDES:

Power pack, motor starter, hydraulic cylinders mounting plates, hoses and fittings and installation manual.

NOTE: This kit is only to be used on 6' (1829 mm) long and 8' (2438 mm) long dock leveler models. For larger sizes (10' and 12' / 3048 mm x 3658 mm) please consult the factory for pricing and part numbers, as the lift cylinder and hydraulic hose will be longer.



SINGLE PHASE

Description	Part ID
115/1/60 (single-acting lip cylinder)	709-0002C
115/1/60 (double-acting lip cylinder)	709-0002-52C
208/1/60 (single-acting lip cylinder)	709-0002-1C
208/1/60 (double-acting lip cylinder)	709-0002-36C
230/1/60 (single-acting lip cylinder)	709-0002-2C
230/1/60 (double-acting lip cylinder)	709-0002-37C

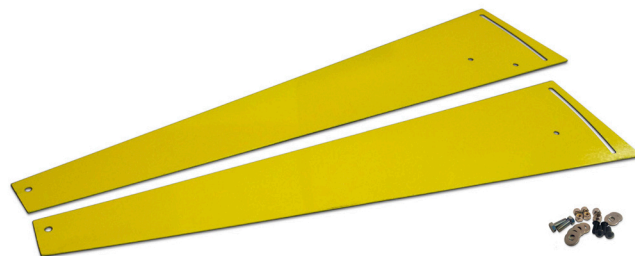
THREE PHASE

Description	Part ID
208/3/60 (single-acting lip cylinder)	709-0002-3C
208/3/60 (double-acting lip cylinder)	709-0002-38C
230/3/60 (single-acting lip cylinder)	709-0002-4C
230/3/60 (double-acting lip cylinder)	709-0002-39C
460/3/60 (single-acting lip cylinder)	709-0002-5C
460/3/60 (double-acting lip cylinder)	709-0002-40C
575/3/60 (single-acting lip cylinder)	709-0002-6C
575/3/60 (double-acting lip cylinder)	709-0002-41C

Safety Toe Guards

Full range toe guards are required under OSHA for all mechanical to hydraulic dock conversions. Kit includes: Two-piece (per side) of 12 gauge double-slotted and pivoted steel panels painted safety yellow. Comes with mounting hardware.

NOTE: Each sold separately.



Description	Kit Part ID
For 6' (1829 mm) or 8' (2438 mm) Long Models	202-5024-99
For 10' (3048 mm) Long Models	202-5024-1-99

Replacement Hydraulic FHE Power Pack

Description	Kit Part ID
1 H.P. 115/208/230/1/60	033-403-1
1 H.P. 208/460/3/60	033-404-1
1 H.P. 208/460/3/60	033-405-1



Dangerous Goods

To avoid unnecessary freight surcharges and documentation that could make shipping certain parts and components across the border prohibitive, the following items are excluded from shipping through the factory parts department and may require the dealer to source locally. Hydraulic fluid: found in cylinders, powerpack reservoirs, etc. (acceptable alternatives that can be sourced locally include Dextron II and N32 hydraulic fluid).

Replacement SP1, Single Push Button Control Box

NOTE: No reset / overload features available.

Description	Kit Part ID
1 H.P. 115/1/50-60	027-006-L
1 H.P. 208/230/240/1/50-60	027-007-L
1 H.P. 208-230/3/60	027-008-L
1 H.P. 460/3/60	027-005-L
1 H.P. 575/3/60	027-009-L



Power Down Lip Assist Kit For Hydraulic Dock Levelers

NOTE: Powerpack not included.

To be used only with self-contained dock levelers not exceeding 8' (2438 mm). For longer models, consult factory for pricing and part number, as a longer hydraulic hose will be necessary.



Item No.	Qty	Part ID	Description
1	1	211-7002	Cylinder Assembly (double-acting)
2	1	034-551	Fitting
3	1	100-5000-7	Hose, 12" long (305 mm) 6# High Pressure
4	1	100-5000-25	Hose, 72" long (1829 mm) 6# High Pressure
5	1	033-667	Plug, Lip Check
6	1	118-905	Spacer Block
7	1	118-904	Switch Activator (power down lips)
8	1	012-204	Washer

Description	Kit Part ID
Kit	783-205

Universal Mechanical Conversion Kits

Advantages of the Blue Giant Hold-Down Box Kit:

- Dependable friction-style hold-down system reduces cross-docking bounce
- Provides instant hold at any point in the dock's operating range.
- Includes complete parts assemblies: hardware and instruction manual

CABLE TYPE: To suit 6' (1829 mm) and 8' (2438 mm) long docks with 20,000-50,000 lbs (9,090 – 22,727 kgs) capacities. 10' (3048 mm) long dock kits also available.



Description	Kit Part ID
Hold-Down Conversion Kit	804-033
(less box)	804-033H

Replacement Hold-Down Only – Cable Type

Weight of one box is 40 lbs (18 kgs). Dimensions are 28" x 8" x 6" (711 x 203 x 152 mm).

Description	Part ID
Cable Type Replacement Hold-Down	788-037-2



Caliper Brake Type

Advantages of the Caliper Brake Hold-Down Assembly:

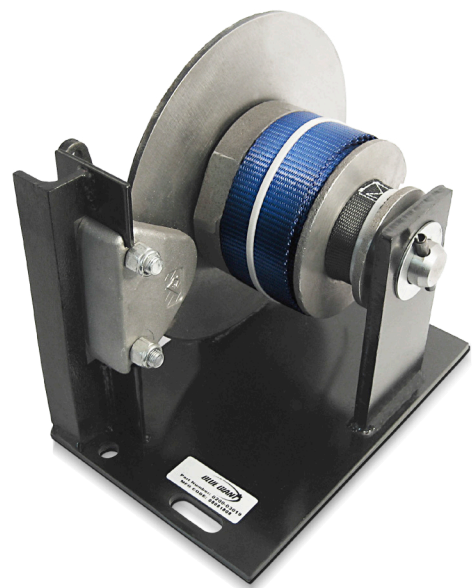
- The hold-down system is compatible with air-ride suspension systems
- Lifting strap is rated at 6,500 lbs (2,954 kgs)
- Proven automotive disc brake technology, calipers will automatically release pressure on the hold-down to compensate for trailer movement, without causing damage to the system
- One-directional gear equals less wear on pawls provides greater longevity as only one side of the pawls are subjected to the gear teeth
- Improves safety by eliminating dock leveler “pop-ups”
- Ergonomic soft-pull chain activation requiring only 3 lbs (1 kg) of force to release the deck
- Smooth and quiet operation
- Easy to install
- Includes complete parts assemblies: hardware and instruction manual



Description	Part ID
Conversion Kit	22-001298

Replacement Hold-Down Only – Caliper Brake Type

Description	Part ID
Caliper Brake Type Replacement Hold-Down (comes with straps)	200-03019C

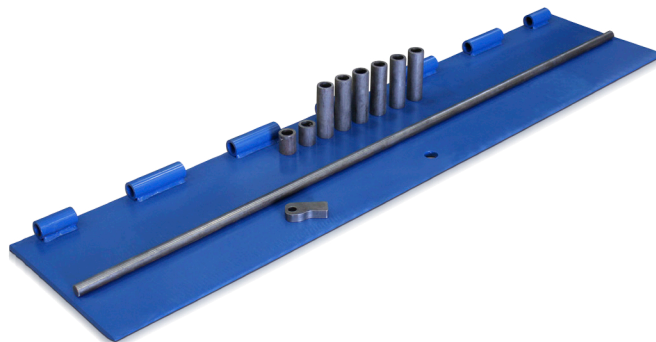


Replacement Lip, Spools, and Pin (kit)

Blue Giant offers a complete selection of replacement lips that can be retrofitted to virtually all dock leveler types.

Since spool sizes vary between manufacturers, Blue Giant offers a replacement kit that includes the lip plate with welded lip spools, deck spools, and the lip pin. This eliminates the potential problems involved in trying to interlink the new lip with deck spools from a different manufacturer.

Lip bracket will be shipped loose unless the dealer instructs otherwise. Installation of the lip actuator may be easier if the lip bracket is installed at the site. Special consideration must be given to the existing deck spools' dimensions and layout if a new lip is purchased without the replacement deck spools and lip pin.



PRODUCT DETAILS:

- Standard paint finishes are “Blue Giant” blue RAL # 5019. Other colors available include battleship grey and black
- Kit includes: Replacement lip, deck spools, headboard gussets (if applicable), and lip pin

SET INCLUDES:

- Quantity x 2 - Lag Plate Assembly
- Quantity x 2 - Lip Stop Assembly
- Quantity x 8 - Anchor Wedge

Length x Width	Capacity	Description	Kit Part ID
16" x 72" (406 x 1829 mm)	25,000 lbs (11,363 kgs)	1/2" (13 mm) Thick Check Plate	LSP-1672-25
	30,000 lbs (13,636 kgs)		LSP-1672-30
	35,000 lbs (15,909 kgs)		LSP-1672-35
	40,000 lbs (18,181 kgs)	5/8" (16 mm) Thick Check Plate	LSP-1672-40
	45,000 lbs (20,454 kgs)		LSP-1672-45
	50,000 lbs (22,727 kgs)		LSP-1672-50

Length x Width	Capacity	Description	Kit Part ID
16" x 78" (406 x 1981 mm)	25,000 lbs (11,363 kgs)	1/2" (13 mm) Thick Check Plate	LSP-1678-25
	30,000 lbs (13,636 kgs)		LSP-1678-30
	35,000 lbs (15,909 kgs)		LSP-1678-35
	40,000 lbs (18,181 kgs)	5/8" (16 mm) Thick Check Plate	LSP-1678-40
	45,000 lbs (20,454 kgs)		LSP-1678-45
	50,000 lbs (22,727 kgs)		LSP-1678-50

Length x Width	Capacity	Description	Kit Part ID
16" x 83" (406 x 2108 mm)	25,000 lbs (11,363 kgs)	1/2" (13 mm) Thick Check Plate	LSP-1683-25
	30,000 lbs (13,636 kgs)		LSP-1683-30
	35,000 lbs (15,909 kgs)		LSP-1683-35
	40,000 lbs (18,181 kgs)	5/8" (16 mm) Thick Check Plate	LSP-1683-40
	45,000 lbs (20,454 kgs)		LSP-1683-45
	50,000 lbs (22,727 kgs)		LSP-1683-50

Length x Width	Capacity	Description	Kit Part ID
18" x 72" (457 x 1829 mm)	25,000 lbs (11,363 kgs)	1/2" (13 mm) Thick Check Plate	LSP-1872-25
	30,000 lbs (13,636 kgs)	5/8" (16 mm) Thick Check Plate	LSP-1872-30
	35,000 lbs (15,909 kgs)		LSP-1872-35
	40,000 lbs (18,181 kgs)		LSP-1872-40
	45,000 lbs (20,454 kgs)		LSP-1872-45
	50,000 lbs (22,727 kgs)		LSP-1872-50

Length x Width	Capacity	Description	Kit Part ID
18" x 78" (457 x 1981 mm)	25,000 lbs (11,363 kgs)	1/2" (13 mm) Thick Check Plate	LSP-1878-25
	30,000 lbs (13,636 kgs)	5/8" (16 mm) Thick Check Plate	LSP-1878-30
	35,000 lbs (15,909 kgs)		LSP-1878-35
	40,000 lbs (18,181 kgs)		LSP-1878-40
	45,000 lbs (20,454 kgs)		LSP-1878-45
	50,000 lbs (22,727 kgs)		LSP-1878-50

Length x Width	Capacity	Description	Kit Part ID
18" x 83" (457 x 2108 mm)	25,000 lbs (11,363 kgs)	1/2" (13 mm) Thick Check Plate	LSP-1883-25
	30,000 lbs (13,636 kgs)	5/8" (16 mm) Thick Check Plate	LSP-1883-30
	35,000 lbs (15,909 kgs)		LSP-1883-35
	40,000 lbs (18,181 kgs)		LSP-1883-40
	45,000 lbs (20,454 kgs)		LSP-1883-40
	50,000 lbs (22,727 kgs)		LSP-1883-50

Length x Width	Capacity	Description	Kit Part ID
20" x 72" (508 x 1829 mm)	25,000 lbs (11,363 kgs)	1/2" (13 mm) Thick Check Plate	LSP-2072-25
	30,000 lbs (13,636 kgs)	5/8" (16 mm) Thick Check Plate	LSP-2072-30
	35,000 lbs (15,909 kgs)		LSP-2072-35
	40,000 lbs (18,181 kgs)		LSP-2072-40
	45,000 lbs (20,454 kgs)		LSP-2072-45
	50,000 lbs (22,727 kgs)		LSP-2072-50

Description	Part ID
Lip Keepers (longer lip) Set	825-652

NOTE:

20" (508 mm) lip upgrade requires new lip keepers.
One set required per dock leveler.

Length x Width	Capacity	Description	Kit Part ID
20" x 78" (508 x 1981 mm)	25,000 lbs (11,363 kgs)	1/2" (13 mm) Thick Check Plate	LSP-2078-25
	30,000 lbs (13,636 kgs)	5/8" (16 mm) Thick Check Plate	LSP-2078-30
	35,000 lbs (15,909 kgs)		LSP-2078-35
	40,000 lbs (18,181 kgs)		LSP-2078-40
	45,000 lbs (20,454 kgs)		LSP-2078-45
	50,000 lbs (22,727 kgs)		LSP-2078-50

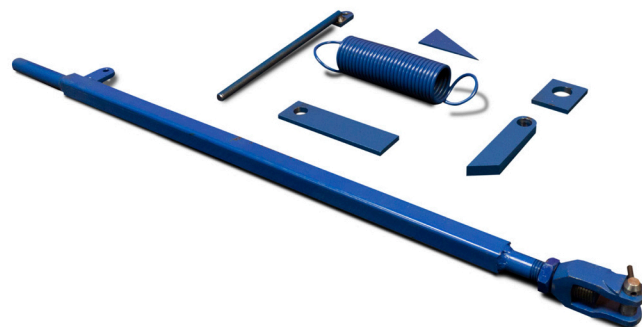
Length x Width	Capacity	Description	Kit Part ID
20" x 83" (508 x 2108 mm)	25,000 lbs (11,363 kgs)	1/2" (13 mm) Thick Check Plate	LSP-2083-25
	30,000 lbs (13,636 kgs)	5/8" (16 mm) Thick Check Plate	LSP-2083-30
	35,000 lbs (15,909 kgs)		LSP-2083-35
	40,000 lbs (18,181 kgs)		LSP-2083-40
	45,000 lbs (20,454 kgs)		LSP-2083-45
	50,000 lbs (22,727 kgs)		LSP-2083-50

Lip Assist Assembly Retrofit Kit for Mechanical Dock Levelers

To be only used with **ONLY** 20" (508 mm) mechanical lip assembly upgrades.

KIT INCLUDES:

Item No.	Qty	Part ID	Description
4	1	203-0023	Bracket, Lip
5	1	203-5041	Actuator Assembly
6	1	107-196	Pin, Clevis
7	1	013-010	Spring Pin
8	1	203-5043	Spring Rod Assembly
9	1	012-213	Washer
10	1	011-509	Nut
11	1	017-077	Lip Assist Spring



Description	Kit Part ID
Lip Assist Assembly Retrofit Kit	203-5040

LDLR Lip Deployment Retrofit Kit for Mechanical Dock Levelers

PROBLEM:

Over time, mechanical docks can develop lip deployment problems, such as failure to fully extend or weakening of the deployment force.

SOLUTION:

Blue Giant offers a 'Lip Deployment Retrofit Kit' to fix this problem.

ACTION:

Replacement of the old multi-link plate or shock absorber with newly designed 'lip latch assembly', followed by the installation of a 'lip assist spring'.

MTS-M Retrofit Kit for Blue Giant Mantis / ADM Mechanical Dock Leveler

PROBLEM:

Over time, mechanical docks can develop lip deployment problems, such as failure to fully extend or weakening of the deployment force.

SOLUTION:

Blue Giant offers a 'Lip Deployment Retrofit Kit' to fix this problem. Replacement of the old multi-link plate or shock absorber with newly designed 'lip latch assembly', followed by the installation of a 'lip assist spring'.

Lip Length	Capacity	Model	Kit Part ID
16" and 18" (406 mm and 457 mm)	25,000 and 30,000 lbs (11,340 and 13,608 kgs)	MTS6-6-25 and MTS6-6-30	200-03400
20" (508 mm)			200-03400-2
16" (406 mm)		MTS6-8-25 and MTS6-8-30	200-03400
18" and 20" (457 mm and 508 mm)			200-03400-2
16" (406 mm)			200-03400-2
16" and 18" (406 mm and 457 mm)	35,000 and 40,000 lbs (15, 876 and 18,144 kgs)	MTS6-6-35 and MTS6-6-40	200-03400-2
20" (508 mm)			200-03400-1
16" and 18" (406 mm and 457 mm)		MTS6-8-35 and MTS6-8-40	200-03400-2
20" (508 mm)			200-03400-1
16" (406 mm)			
18" (457 mm)	25,000 and 30,000 lbs (11,340 and 13,608 kgs)	MTS66-6-25 and MTS66-6-30	200-03400
20" (508 mm)			200-03400-2
16" (406 mm)			200-03400-1
16" and 18" (406 mm and 457 mm)		MTS66-8-25 and MTS66-8-30	200-03400
16" (406 mm)			200-03400-2
18" and 20" (457 mm and 508 mm)	35,000 and 40,000 lbs (15, 876 and 18,144 kgs)	MTS66-6-35 and MTS66-6-40	200-03400-2
16" (406 mm)			200-03400-1
18" and 20" (457 mm and 508 mm)		MTS66-8-35 and MTS66-8-40	200-03400-2
16" (406 mm)			200-03400-1
18" and 20" (457 mm and 508 mm)			200-03400-2
16" (406 mm)			200-03400-1
18" and 20" (457 mm and 508 mm)			200-03400-1
16", 18", 20" (406, 457, 508 mm)	25,000 and 30,000 lbs (11,340 and 13,608 kgs)	MTS7-6-25 and MTS7-6-30	200-03400-2
16" and 18" (406 mm and 457 mm)			200-03400-2
20" (508 mm)		200-03400-1	
16", 18", 20" (406, 457, 508 mm)	35,000 and 40,000 lbs (15, 876 and 18,144 kgs)	MTS7-6-35 and MTS7-6-40	200-03400-1
16" (406 mm)			200-03400-2
18" and 20" (457 mm and 508 mm)		MTS7-8-35 and MTS7-8-40	200-03400-1
16" (406 mm)			200-03400-1
16" (406 mm)	25,000 and 30,000 lbs (11,340 and 13,608 kgs)	MTS7-10-25 and MTS7-10-40	200-03400-2

Overhead Door Accessories

Metal Canopies

Reduce the risk of physical injury and legal / insurance issues. Blue Giant's NEW metal canopies are designed to solve common problems at loading docks. Eliminate problems associated with wet, slippery dock levelers and steps, as well as ice build-up.

Loading Dock Canopies

PRODUCT DETAILS:

- 18 gauge galvanized steel
- Comes with 3" x 3" (76 x 76 mm) rain gutter
- Three support gussets
- Optional snow load support and custom sizes available

Description	Part ID
120" (3048 mm) x 6" (152 mm) Rear Height x 18" (457 mm) Projection	70-001808
120" (3048 mm) x 6" (152 mm) Rear Height x 24" (610 mm) Projection	70-001809
36" (914 mm) Projection	70-001810



Main Door Canopies

PRODUCT DETAILS:

- 18 gauge galvanized steel
- Comes with 3" x 3" (76 x 76 mm) rain gutter
- Three support gussets
- Optional snow load support and custom sizes available

Description	Part ID
48" (1219 mm) x 12" (305 mm) Rear Height x 36" (914 mm) Projection	70-001811
120" (3048 mm) x 6" (152 mm) Rear Height x 24" (610 mm) Projection	70-001814



Door Seal Repair Kit

KIT INCLUDES:

Vinyl patches, tread, needle and glue.

Description	Kit Part ID
Door Seal Repair Kit	080-900

Inflatable Shelter Repair Kit

KIT INCLUDES:

6 pieces of 12" x 12" (305 x 305 mm) patches and can of glue.

COLOUR: Blue material, 40 oz. vinyl

Description	Kit Part ID
Inflatable Shelter Repair Kit	080-901

Adjustable Head Pad Hardware

KIT INCLUDES:

6 angle brackets, 6 flat brackets, 17 pcs 3/8" x 1 7/8" (10 mm x 48 mm) sleeve anchors, 34 pcs #14 x 1.5 (38 mm) wood screws, 2 pcs 3" (76 mm) screw hooks, 1 pc 5/16" (8 mm) x 4" (101 mm) hex bolt, 1 pc 5/16" (8 mm) and 4 pcs (51 mm) rollers.

Description	Kit Part ID
Hardware Box for BG300	015-003

Blue Giant PVC Strip Curtains and Doors

Make your facility safer, quieter, and more energy efficient by protecting your entryways with Blue Giant PVC strip curtains!

As a leading provider of loading dock and material handling solutions, Blue Giant strives to provide customers with the most complete and innovative range of Aftermarket items on the market. In keeping with this aim, we are pleased to inform you that PVC strip curtains have now been added to our Aftermarket offerings.

Benefits of using PVC Strip Curtains:

- Can be installed in minutes
- Conserve conditioned air, even in high-activity areas
- Reduce heating and refrigeration costs
- Reduce noise levels
- Easy to clean and maintain

Why use PVC Strip Curtains:

- Energy savings and temperature control
- Safety and visibility
- Noise, dust and pollution control
- Economical and practical
- Noise, dust and pollution control
- Prevention of birds, insects and rodents

Applications:

- **Cold chain:** food processing and manufacturing, storage, logistics and distribution
- **Food service:** walk-in coolers and freezers, refrigerated display units and service entrances
- **Refrigeration:** walk-in coolers and freezers, refrigerated warehouses and refrigerated display units
- **Supermarket / retail:** walk-in coolers and freezers, refrigerated display units and rear loading doors and service entrance
- **Warehouse / industrial:** loading dock doors, interior doors and service entrance
- **Welding applications:** designed to filter the ultra-violet radiation coming from the welding process

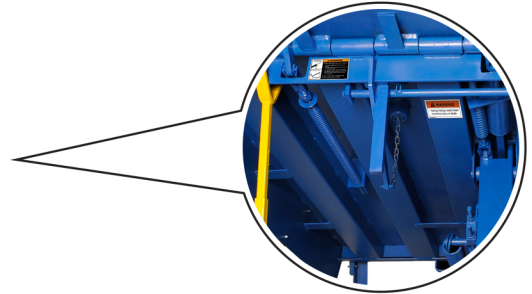
Service Technician Accessories

Tools designed for use by service technicians out in the field.

Spring Socket Tool

When it comes to removing or adjusting dock springs, safety is always a concern. The spring socket tool is designed to keep employees safe when removing or adjusting springs on a mechanical dock leveler.

Speed up your main spring adjustments quickly and efficiently with our new 15" long x 1-1/8" deep (381 x 29 mm) socket used for adjusting or removing main springs on all A & U series mechanical dock levelers. This tool is designed to fit a 1/2" (51 mm) drive socket wrench. With its long depth, it allows for continuous adjustments without the need to remove the socket.

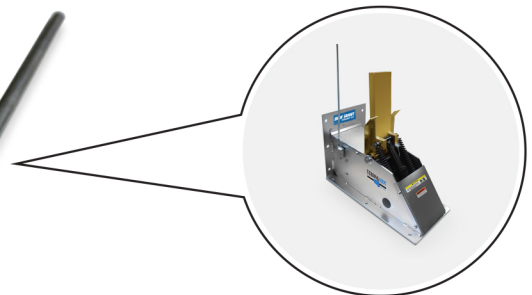
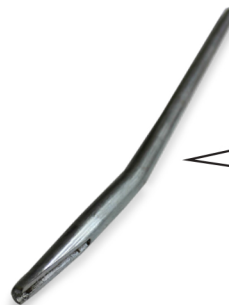


Description	Part ID
Socket, Spring Tool	223-5024

Spring Removal Tool

When it comes to removing springs, safety is always a concern. The TL85 spring removal tool is designed to keep employees safe when removing or adjusting springs on a TL85 vehicle restraint.

Description	Part ID
Spring Removal Tool for TL85	51-009053



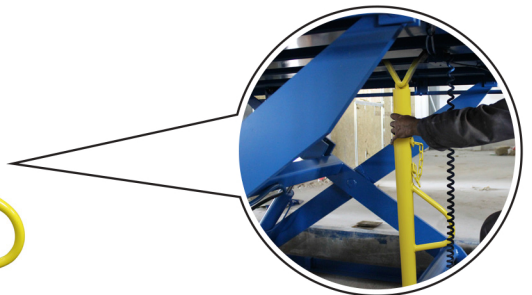
Portable Maintenance Safety Stand

Reduces the risk of employee injury and insurance / legal issues.

PRODUCT DETAILS:

- Designed for easy use by service technicians during repair and maintenance procedures
- Can be used with dock levelers and scissor lifts

Description	Part ID
Safety Stand	796-710



Folding Security Gates

Manage your environment by protecting sensitive and secure areas from theft, pilfering, and trespassing. Folding security gates also allow fresh air to enter the building, creating a more comfortable work environment.

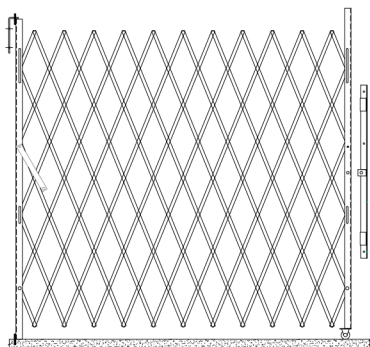
14 gauge steel construction with gray polyurethane finish handles rigorous day-to-day usage. Includes 1 1/2" x 1 1/2" x 1/8" steel uprights with steel casters and drop pins.

Perfect for loading docks, warehouses, shipping and receiving doors, personnel entrances, retail stores, and more.

Easily mounts in jamb or on the face of the outside wall. Extension brackets are available for mounting around an existing garage door.

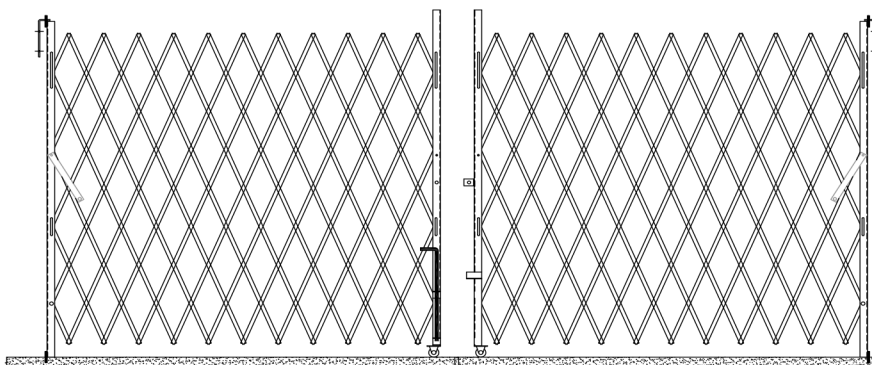
Single Gates

Description	Part ID
66" W x 60" H (1676 x 1524 mm)	BG-66-60S
66" W x 78" H (1676 x 1981 mm)	BG-66-78S
66" W x 96" H (1676 x 2438 mm)	BG-66-96S
78" W x 78" H (1981 x 1981 mm)	BG-78-78S
78" W x 96" H (1981 x 2438 mm)	BG-78-96S
90" W x 78" H (2286 x 1981 mm)	BG-90-78S
90" W x 96" H (2286 x 2438 mm)	BG-90-96S



Double Gates

Description	Part ID
120" W x 78" H (3048 x 1981 mm)	BG-120-78D
120" W x 96" H (3048 x 2438 mm)	BG-120-96D
144" W x 78" H (3658 x 1981 mm)	BG-144-78D
144" W x 96" H (3658 x 2438 mm)	BG-144-96D
168" W x 78" H (4267 x 1981 mm)	BG-168-78D
168" W x 96" H (4267 x 2438 mm)	BG-168-96D
192" W x 78" H (4877 x 1981 mm)	BG-192-78D
192" W x 96" H (4877 x 2438 mm)	BG-192-96D
96" W x 78" H (2438 x 1981 mm)	BG-96-78D
96" W x 96" H (2438 x 2438 mm)	BG-96-96D



Manual Pallet Jacks

Tools designed for use by service technicians out in the field.

FPT-55 Manual Pallet Jack

NOTE: Only available in USA

A perfect choice for customers seeking an inexpensive yet reliable medium-duty hand pallet truck. 5,500 lbs (2,495 kgs) capacity.

PRODUCT DETAILS:

OPERATION:

- 180 degree operational arc
- Thirteen full strokes to reach maximum elevated height of 7.8" (198 mm)
- Control handle has three position (raise / neutral / lower) fingertip controls
- Spring loaded handle returns to upright position automatically

FORKS / CHASSIS:

- Fork size 27" x 48" (686 x 1219 mm) standard, 20.5" x 48" (521 x 1219 mm) optional
- Tapered forks with ramped tips allow for easy pallet entry and exit
- Rugged heavy duty frame
- Adjustable push rods allow for individual adjustment capability
- Frame is powder coat paint
- Hangers are constructed of cast iron for greater strength and longevity
- Easy maintenance
- Approximate shipping weight – 180 lbs (82 kgs)

HYDRAULICS:

- Quality pump design complete with a special lowering valve allowing controlled rate of descent, and an overload by-pass valve



Description		Part ID
Standard	Manual Pallet Jack 5500 lbs (2,495 kgs)	FPT55/27X48

WARRANTY:

- One year structural and one year hydraulic pump warranty

EPT-55 Manual Pallet Jack

An excellent heavy-duty hand pallet truck for customers who want performance and value. 5,500 lbs (2,495 kg) capacity.

PRODUCT DETAILS:

OPERATION / HANDLE:

- Ten full strokes to reach maximum elevated height of 7.8"
- 200 degree operational arc
- Control handle has three position (raise / neutral / lower) fingertip controls
- Foam cushioning is standard
- Spring loaded handle returns to upright position automatically
- Ergonomically designed and free of pinch points

FORKS / CHASSIS:

- Fork size 27" x 48" (686 x 1219 mm) standard, 20.5" x 48" (521 x 1219 mm) optional
- Rugged heavy duty frame
- Tapered forks and entry and exit rollers allow for smooth pallet handling
- Frame is powder coat paint
- Adjustable push rods allow for individual adjustment capability
- Helper rollers for easy exit and entry of pallets
- Hangers are constructed of cast iron for greater strength and longevity
- Easy maintenance - grease fittings and bushings at all pivot points



Description		Part ID
Standard	Manual Pallet Jack 5500 lbs (2,495 kgs)	EPT55/27X48

HYDRAULICS:

- Galvanized hydraulic pump includes an overload relief valve and braking can be actuated by both hand and foot controlled release

WARRANTY:

- Two year structural and two year hydraulic pump warranty

EPT-55-G Galvanized Manual Pallet Jack (special order)

Ideal for use in freezers (with temperatures to minus 10 degrees Fahrenheit) as well as chemical exposure applications. Hygienic, durable and easy to clean. Features 100% galvanized pump, handle, frame and components, and polyurethane wheels and rollers. 5,500 lbs (2,495 kgs) capacity.

PRODUCT DETAILS:

OPERATION / HANDLE:

- 200 degree pivot action, single bearings and "ball-thrust" steering
- Control handle has three position (raise / neutral / lower) fingertip controls
- Spring loaded handle returns to upright position automatically
- Foam cushioning is standard
- Ten full strokes to reach maximum elevated height of 7.8" (198.12 mm)
- Ergonomically designed and free of pinch points

FORKS / CHASSIS:

- Tapered forks and entry and exit rollers allow for smooth pallet handling
- Adjustable push rods allow for individual adjustment capability
- Fork size 27" x 48" (686 x 1219 mm) standard, 20.5" x 48" (521 x 1219 mm) optional
- Easy maintenance - grease fittings and bushings at all pivot points
- Rugged heavy duty frame
- Galvanized hangers are constructed of steel for greater strength
- Helper rollers for easy exit and entry of pallets

HYDRAULICS:

- Galvanized hydraulic pump includes an overload relief valve and braking can be actuated by both hand and foot controlled release



Description		Part ID
Special Order	Galvanized Manual Pallet Jack	EPT55/27X48-G

WARRANTY:

- Two year structural and one year hydraulic pump warranty

EPT-55-SS Stainless Steel Manual Pallet Jack (special order)

The EPT-55-S features 100% stainless steel pump, handle, frame and components construction, and polyurethane wheels and rollers offering maximum corrosion resistance in chemical, wet or cold applications.

PRODUCT DETAILS:

OPERATION / HANDLE:

- 200 degree pivot action, single bearings and "ball-thrust" steering
- Control handle has three position (raise / neutral / lower) fingertip controls
- Spring loaded handle returns to upright position automatically
- Foam cushioning is standard
- Ten full strokes to reach maximum elevated height of 7.8" (198.12 mm)
- Ergonomically designed and free of pinch points

FORKS / CHASSIS:

- Tapered forks and entry and exit rollers allow for smooth pallet handling
- Adjustable push rods allow for individual adjustment capability
- Fork size 27" x 48" (686 x 1219 mm) standard, 20.5" x 48" (521 x 1219 mm) optional
- Easy maintenance - grease fittings and bushings at all pivot points
- Rugged heavy duty frame
- Stainless steel hangers are constructed of steel for greater strength
- Helper rollers for easy exit and entry of pallets

HYDRAULICS:

- Complete with a special lowering valve allowing controlled rate of decent and an overload by-pass valve



Description		Part ID
Special Order	Stainless Steel Manual Pallet Jack	EPT55/27X48-SS

WARRANTY:

- Two year structural and one year hydraulic pump warranty

NOTES